

Gridcore Case Study

Swerea MEFOS AB consolidates simulation work using Gcompute Simulation Data Managing module.

“By storing cases meta-data in our model database we can use our skills from previous projects and evolve much faster in a really effective way.”

Jan-Åke Sundberg, IT Manager and Cluster Administrator



Courtesy of Swerea MEFOS AB

swerea | MEFOS

Customer: Swerea MEFOS AB
Customer size: 75 employees
Country: Sweden
Industry: Metallurgic

www.mefos.se

Customer profile

MEFOS's business concept is applied research, development and consulting in Process Metallurgy, Heating and Metalworking, Environmental Engineering and Energy Efficiency mainly for the ferrous and nonferrous industries.

MEFOS's research activities are joint research for member companies and contract research for individual clients. The research is performed by three departments:

- Process Metallurgy
- Heating and Metalworking
- Metallurgy and Environment

Since 1 July 2002 MEFOS has run its business as a limited liability company (Ltd.). Owners of the company are MEFOS – the Foundation for Metallurgical Research (75%) and Ireco Holding AB (25%).

About MEFOS

Swerea MEFOS AB is a Swedish company founded in 1963. MEFOS is renowned worldwide for its unique pilot plant equipment for process metallurgy, heating and metalworking as well as its ability to perform large-scale research projects thanks to its High Performance Computing resources and technical equipments.

HPC resources at MEFOS

MEFOS started its collaboration with Gridcore in 2003, with the first Scandinavian cluster using x86-64 architecture. Since that, MEFOS system has been updated three times. Current system is also a Linux-based solution including Infiniband and a graphic accelerator blade for visualization.

“It is always gratifying to work with Gridcore's team. It is quite interesting and stimulating to cooperate and participate with them to make our systems grown and improved.”

Jan-Åke Sundberg

Apart from the hardware, MEFOS licenses some of Gridcore products included in its software suite (EGompute™) such as a graphical interface to access MEFOS HPC platform (GcPortal™), a modularized environment completely updated and easily expandable (GcDistro™) and a Simulation Data Managing module (GomputeSDM™) where simulation results are stored.

Organizing data

Simulations usually generate huge amounts of data that engineers may use in a close future in order to improve models, create statistics, share with customers, etc...

Swerea MEFOS AB finds this feature indispensable into their system. They need to keep their simulation data in a structured system where engineers can easily access, look for the required information, change simulation parameters and run them again.

GomputeSDM allows MEFOS engineers to organize and store their simulations in a structured and customizable way. GomputeSDM provides MEFOS engineers with a collaborative environment where simulations may be shared, commented or just downloaded from each member of the team without sending back and forward information just by storing it at one single site.

The future: Simulation Data Managing

GomputeSDM is evolving to a smart and highly configurable infrastructure where engineers, scientists and project managers will enjoy a complete personalized data managing environment. SDM tool will provide managers with the most suitable way to control the progress and success of his/her team projects, while his/her time the team can cooperate and share its information.

Using new GomputeSDM users may decide the meta-data they want to keep from each simulation creating this way a completely personalized and dynamic database for his/her team.

Working with Gridcore

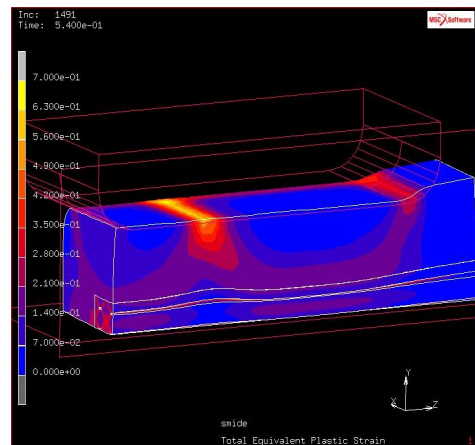
Apart from EGompute products, Gridcore provides MEFOS with a complete support in terms of Hardware and software update and maintenance.

Gridcore's support (GcSupport™) is a dedicated and personalized service. Every single customer has a personal assistant from Gridcore's professional team.

"Gridcore takes the full responsibility. They integrate our codes in the cluster and make them run properly providing us with a turn key solution since the very beginning.

Our projects and their success depend completely on our cluster. We need 100% up-time from it and GcSupport address all these issues for us."

Jan-Åke Sundberg.



Courtesy of Swerea MEFOS AB

Further information

For more information about Swerea MEFOS AB:
www.mefos.se

For more information about Gridcore AB:
www.gridcore.se

All rights Reserved

All brand and product names that appear in this document are or may be trademarks of, and are used to identify products or services of, their respective owners.

This publication could include technical inaccuracies or photographic or typographical errors. This publication was produced in Sweden, August 2009. Gridcore AB may not offer the products, services or features discussed in this document in other countries, and the information may be subject to change without notice.

References herein to Gridcore products and services do not imply that Gridcore intends to make them available in other countries